

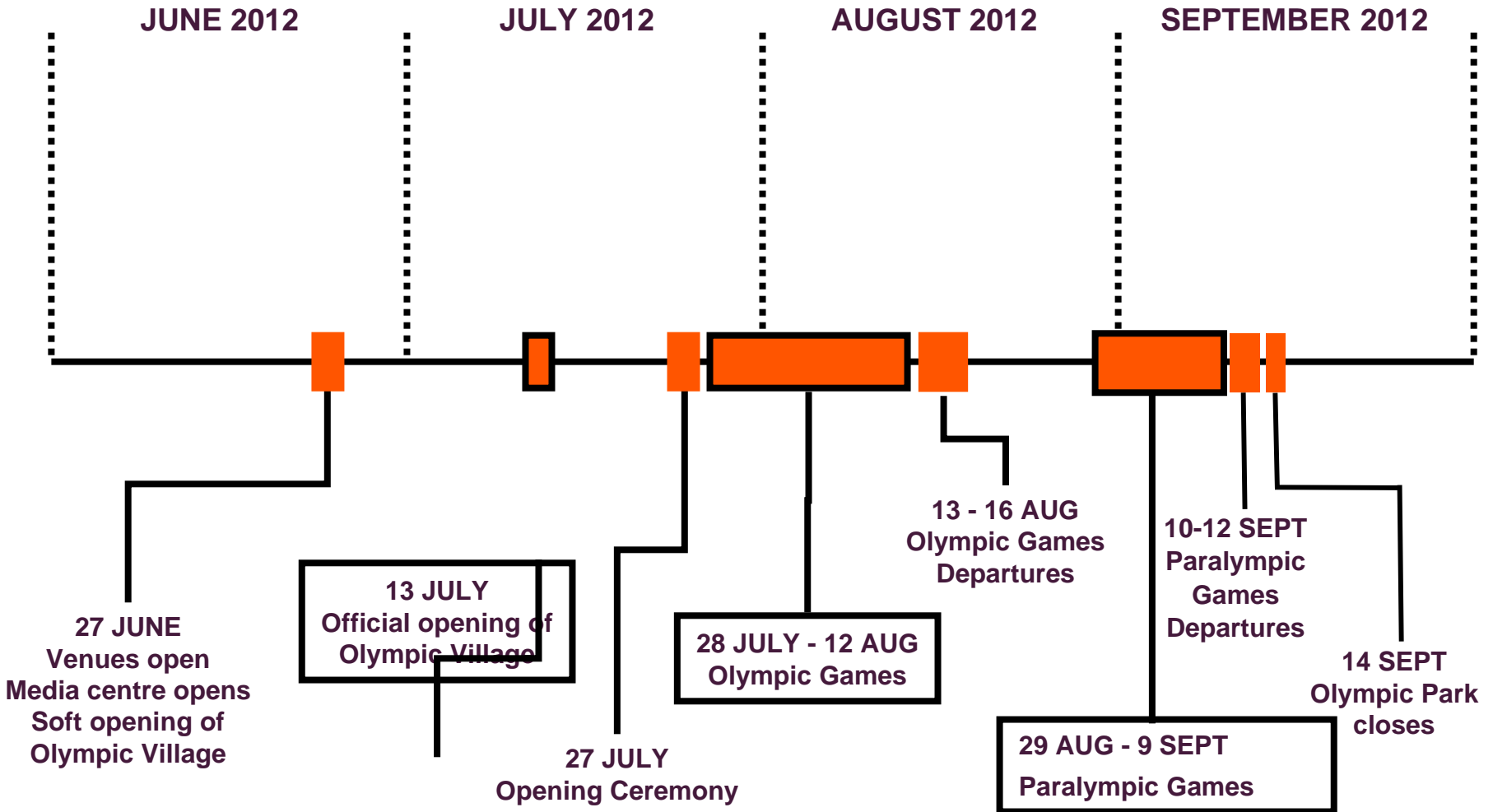


Olympic and Paralympic Route Network

Karen Agbabiaka - ORN Programme Manager(ODA)



Key dates during the Games Period



Royal Holloway, University of London – recap

- Royal Holloway - hosting over 1,350 competitors and officials during the Olympic Games and during the Paralympic Games.
- Royal Holloway's close proximity to Eton Dorney and the M4 makes it suitable to host competitors and officials
- Shuttle buses will run between Royal Holloway and Eton Dorney (6am until 8:30pm).



ORN and PRN Programme – Objectives

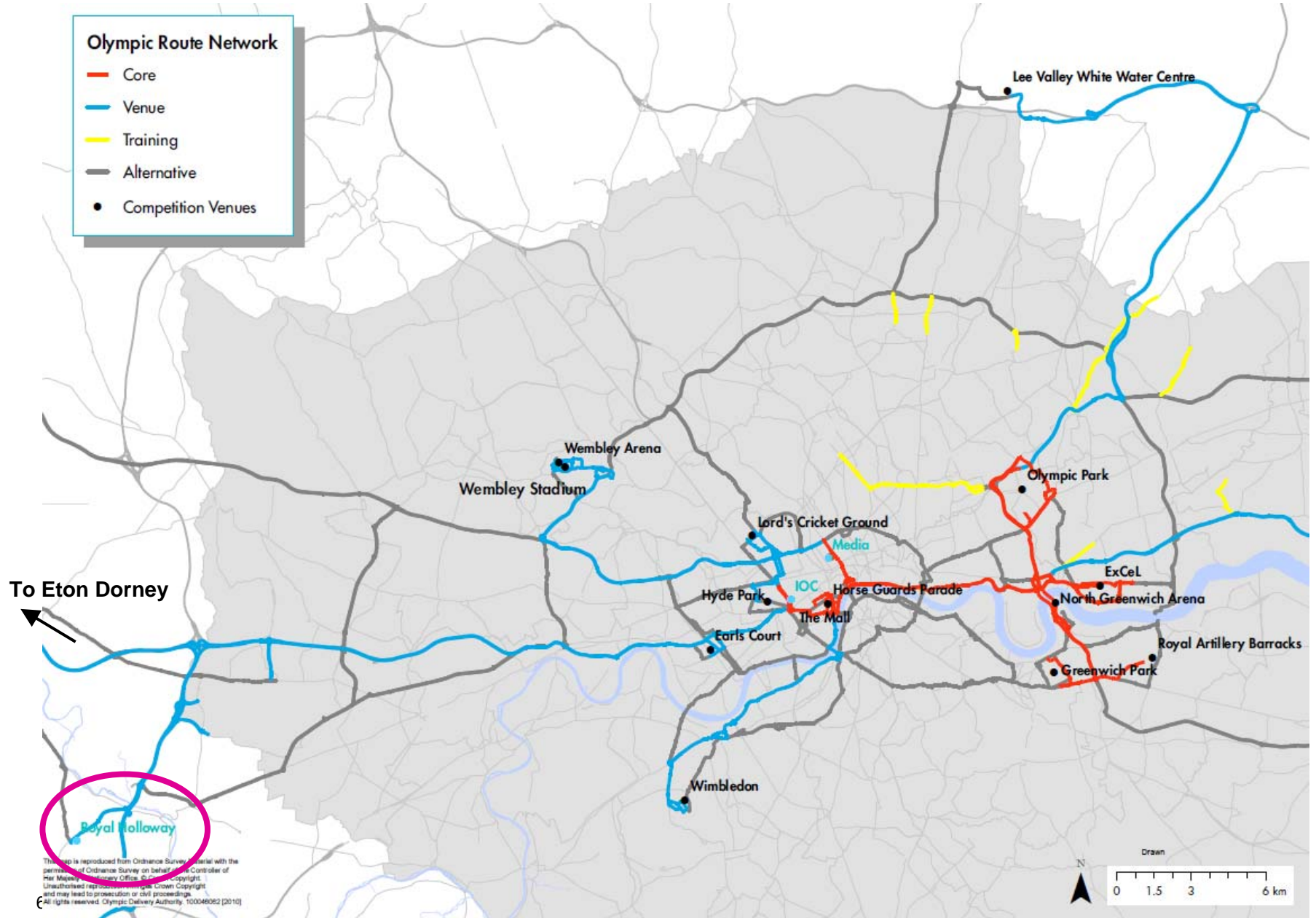
Enable safe, secure and reliable transport for the Games Family to achieve target journey times, within budget;

Minimise impacts on other (non-Olympic) road users during Games time whilst keeping London and the rest of the UK working; and

Ensure reliability of the route network in terms of journey times.

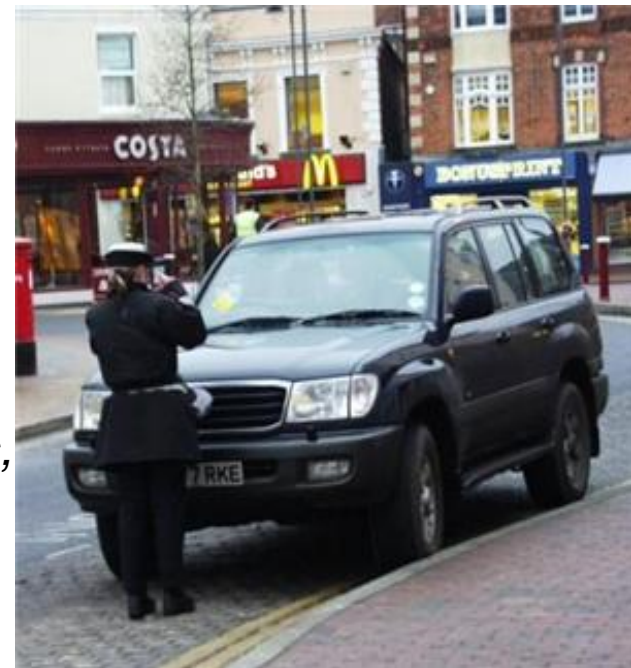


Olympic Route Network – Greater London

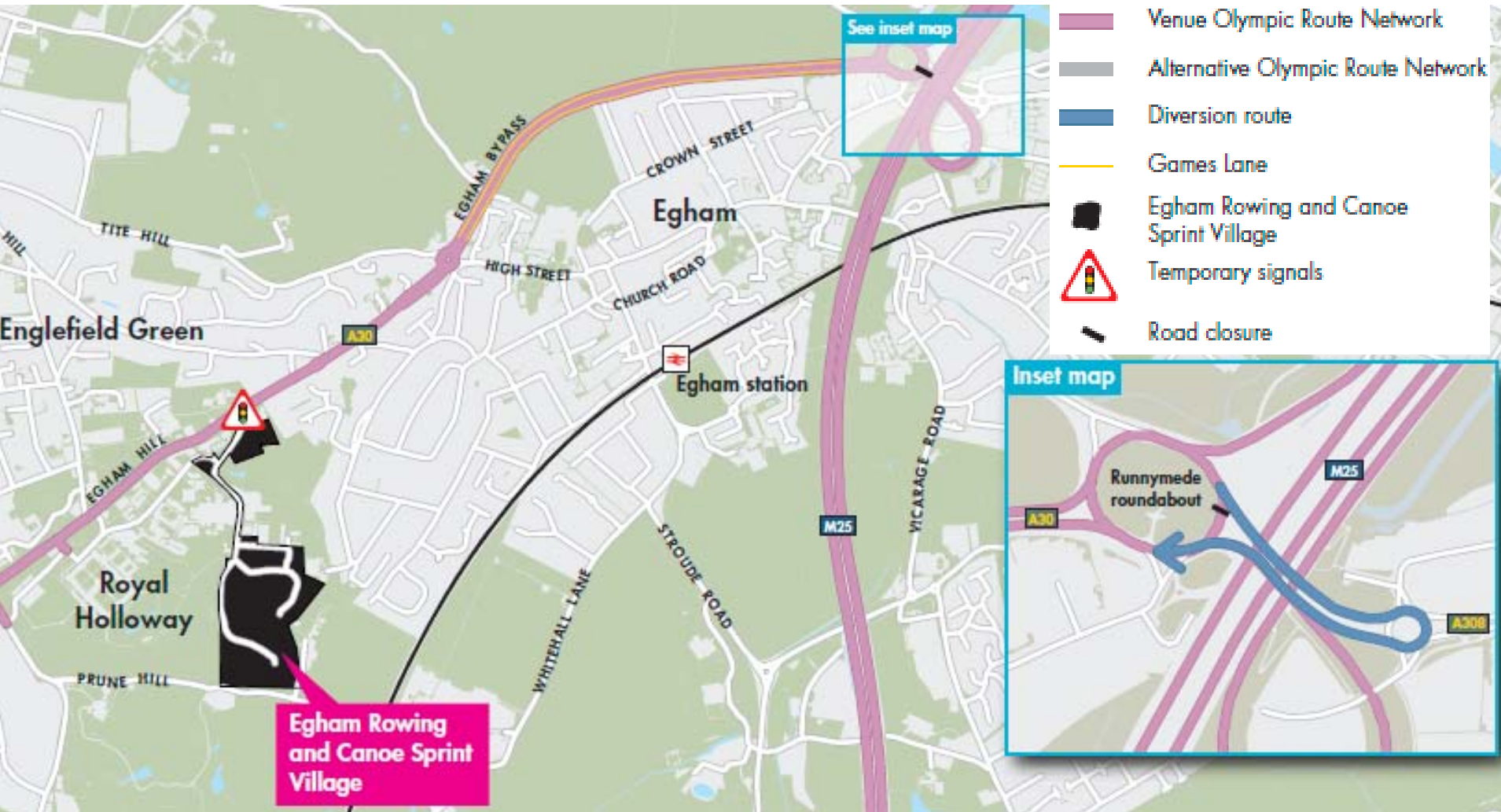


Projects that help achieve journey times?

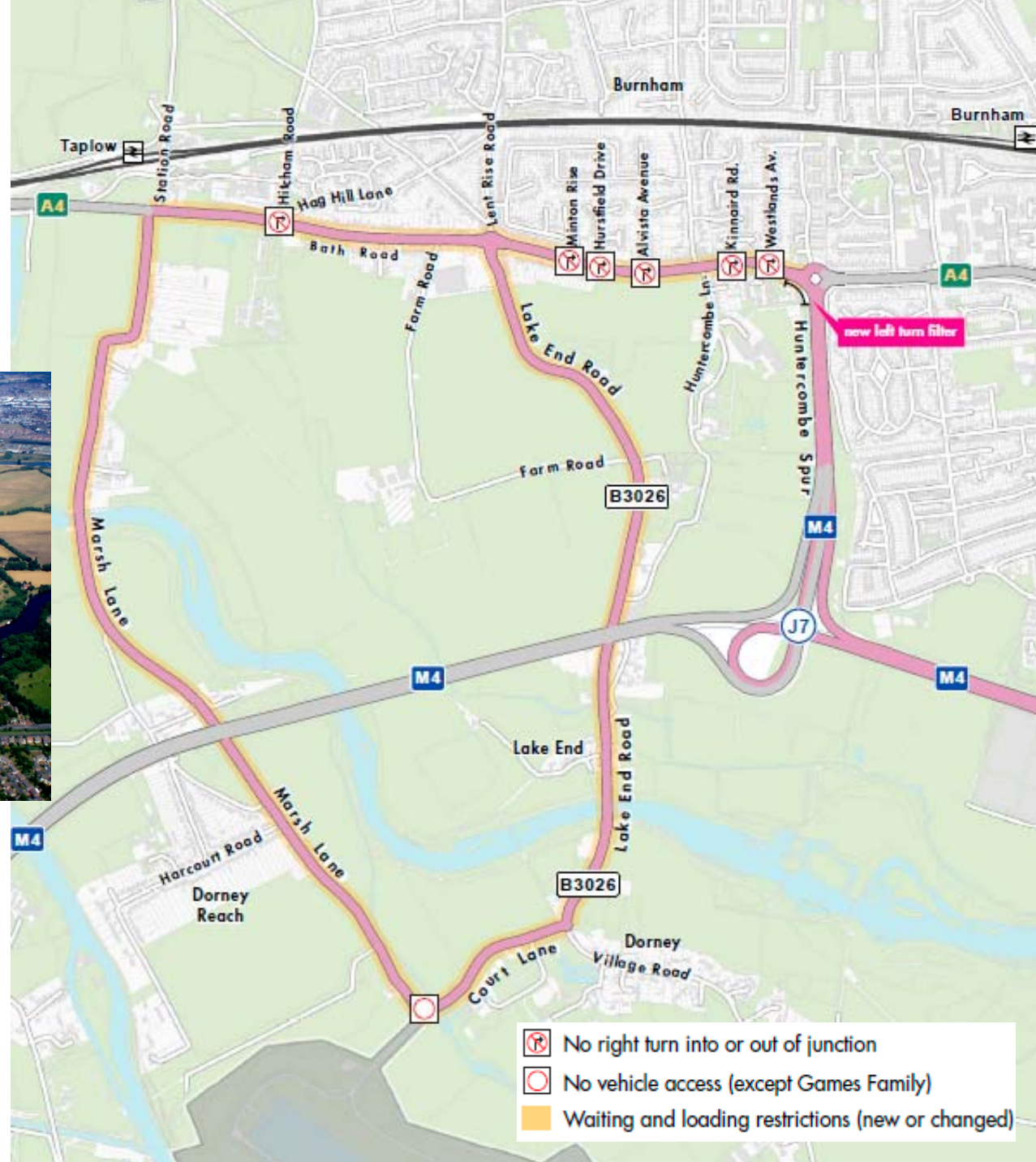
1. **Traffic management measures** *e.g. Junction alterations, Banned turns, Side Road Closure, Parking/ Loading/ Bay Changes*
2. **Traffic Compliance (enforcement)** *e.g. Tow trucks, Traffic Wardens, CCTV*
3. **Clearway 2012** *e.g. Street works coordination and embargoes)*
4. **Third Party Projects coordination** *e.g. Crossrail*
5. **Travel demand management** *e.g. Travel advice to Businesses*



Route to Royal Holloway, University of London



Route to Eton Dorney



Highways Agency(HA) Network

Incident Support Units (ISU):

- Provide incident management duties, and emergency litter/debris clearance
- Make repairs on the roads

Traffic officer Service: Enhanced

- Patrolling the network
- Incident management

Control Room – real time monitoring

- Monitoring incidents, liaising with RCC and TCC
- Deploying ISU



ORN Testing

- Route between Eton Dorney and Royal Holloway was subject to testing
- Objective was to understand the local impact on neighbouring roads and junctions as a result of temporary ORN measures, and minimise disruptions where necessary.
- Test dates were
 - 28 July to 31 July (Baseline conditions)
 - 4 Aug. to 7 Aug. (coincided with World Rowing Junior Championships)
 - 11 Aug. to 14 Aug. (impacts in Surrey)
- Surveys were undertaken on the days above
- Significant data was collected and is currently being assessed
- Report expected by the end of October 2011



Local Authority and partner involvement

Venue Transport Working Group

- Share local knowledge and operational experiences to assist with the development of the local transport plan
- Strengthen relationships with local partners and LOCOG / ODA

Membership

- Royal Borough of Windsor and Maidenhead, Buckinghamshire County Council, South Buckinghamshire District Council, Slough Borough Council, Thames Valley Police, British Transport Police, Highways Agency, First Group, Parsons Brinckerhoff / Project Centre

Progress

- ORN delivery monthly progress meetings

Keeping you informed and working with you

- Dedicated ORN Engagement Officers appointed in Buckinghamshire and Surrey
- ODA working closely with the Highways Agency and local authorities on communication and publicity
- Ongoing engagement with the local communities, businesses and other affected stakeholders, co-ordination with other transport projects
- continue to raise awareness of ORN among stakeholders



General Update

- Second edition of the London 2012 Transport Plan published June 2011
- Buckinghamshire County Council (BCC) is the lead authority for the ORN & PRN in the Eton Dorney area
- ORN drop-in sessions At Eton Dorney were successfully carried out on the 22 & 23 July – over 190 attended
- ORN testing was successfully carried out – 28 July to 14 August
- Temporary traffic management measures designs – complete
- BCC and Surrey CC submitted ORN delivery plan for review to the ODA
- Service Level Agreement with BCC & SCC expected by end of Oct 2011

What next?

Implementation of Delivery plans (SCC)

- Measures to be developed
- Procurement of materials
- Procurements of services
- Development of Operational plans

Traffic Orders

- Notices of the proposals will be published locally (Oct 2011) - Statutory consultation

Engagement

- Local Engagement Plans implemented by SCC up to and during the Games
- Information will also be published on london2012.com/orn



Questions



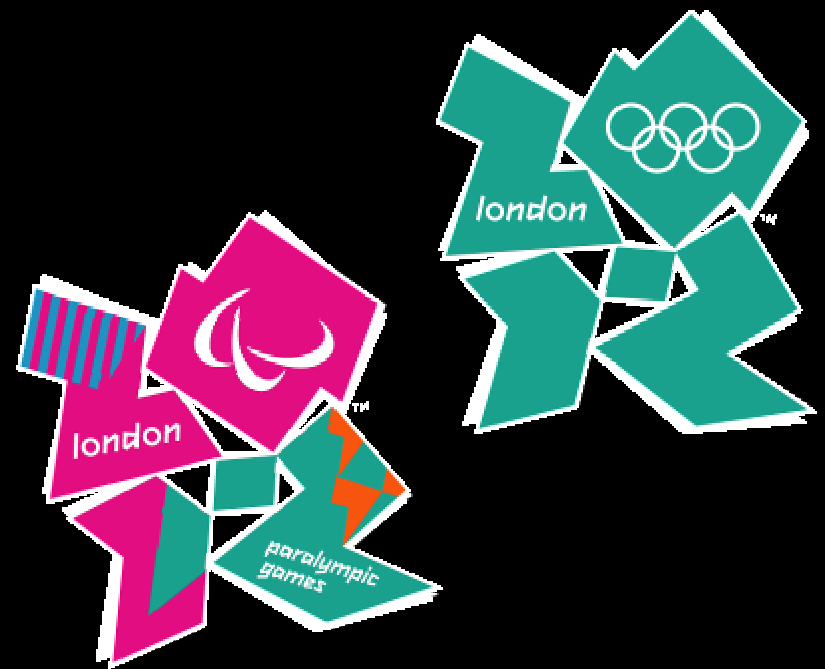
The construction of the venues and infrastructure for the London 2012 Games is funded by the National Lottery through the Olympic Lottery Distributor, the Department for Culture, Media and Sport, Greater London Authority and the London Development Agency.



MAYOR OF LONDON



Thank you



The official Emblem of the London Organising Committee of the Olympic Games and Paralympic Games Ltd is protected by copyright. © London Organising Committee of the Olympic Games and Paralympic Games Ltd 2007. All rights reserved.